

Welcome to use the IL-CTRL-VIS2 off-line controller.

This controller can be used together with RGB pixel modules, pixel strip lights and digital tubes to realize plenty and colorful lighting effects, it can also realize flexible control by duplicating programs edited by computer into SD card. It is widely used in the amusement place, clubs, indoor recreation areas and other outdoor large construction decoration. One controller can control up to 1000 pixel points. As for large screen(With more than 1000 pixel points), we can use multi- controllers working synchronously, and each controller controls one sub-scene.

Specification parameter

1. Part number: IL-CTRL-VIS2-220
2. Weight: 0.6kg
3. Dimension: 130×90×49mm
4. Input: 110-220VAV, 50/60HZ
5. Data signal connector: 4-pin female connector
6. Synchro communication connector: 3-pin male/female connector
7. Control 1000 pixel spots
8. 32 Gray levels scanning data output
9. Output scanning support irregular screen

Connection and pressed key instruction:



Tie-in



A.Synchro communication wire input; **B.**SD card Slot; **C.**Synchro communication wire; **D.**Power Input110~220VAC; **E.**Data Output.

Attention:

- Please read the instruction carefully before installation, and follow the operation direction in installation.
- Don't use it in corrosive and flammable situation.
- Don't touch heat source.
- Please make sure that all the plugs are in correct connection.
- The power source must be shut off before installation or maintenances.

Please shut off power source if possible when you insert or pull out SD card.

Product feature:

1、Use the SD card to save program document

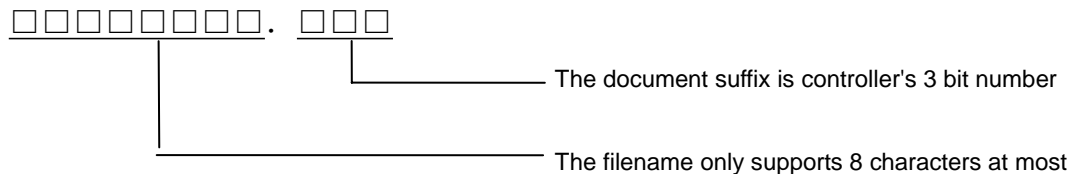
When SD card is inserted into the controller, it can identify the documents which belong to this controller automatically, the controller support 1G memory card at most.

2、The Windows file operation way, the data duplicate flexibly & conveniently

Before using the card, please change the format into FAT16 filing system, then use the reader and copy the software editor's program document into the SD card root directory directly.

3、The card can store 999 program documents (file size is unlimited) simultaneously

A controller's card is allowed to store other controller's program document, the document suffix can be only three numbers and the range is between 001~255. The controller only distinguishes the document which has the same suffix as the serial number of the controller. Other suffix's document won't distinguish. The filename has the following rules:



For instance: The SD card with *.001 suffix document must be inserted in the 001# controller, when a controller store the documents which has other serial number suffix, the controller will ignore them. 001# is the default primary controller, others are minor controller.

A document is a program, each program could be divided into several fragments, the content editor will be all completed by LED program software developed by ourselves)

4、Multi- controllers can work together

Set serial number in the address of local controller. "001" is the master controller, other numbers are subordinative controllers. Only one controller can be set as master when many controllers are connected together, the others should be subordinative. Many controllers connected together it can control more than 1000 pcs pixel. In order to realize great synchronous lighting effects, we suggest the maximum connection of each controller no more than 800pcs pixel.

Then choose the program in the master controller, all the subordinative controller can play the same program as the master under the condition that the prefix of program in the subordinative controller is the same as the one in the master. For example, the program playing in the master is "prgtest 001", the 002 subordinative controller must be "prgtest 002", and the 003 must be "prgtest 003", etc. Here the suffix also means the next scene's serial number of its related controller.

Please do not detach the connection when they are playing synchronously, when it is cut and then connected again, the detached subordinative controller will not play synchronously as master controller provisionally, till you choose the new program on the master controller, or await a new turn or restart all of them.

5、Insert and pull out the SD card

When the card inserted, it will search the correct document which belongs to its own serial number, and show the total files which it find out. Pls do not force to pull out the card When the controller is working!

6、Processing function for irregular screen

This controller we use unique processing function of irregular screen. Once you set the irregular parameter in the software which

create program documents, then the document has involved irregular data when it is done. The controller will carry on the data scan out automatically according to the irregular data in the document.

Function instruction:

1、Play Programs

Press Enter into the first-level menu, the arrow points at **1-Play**, then press "Enter" to files selection menu, it shows filename, the program name, file sum and the current document serial number, in this condition press "UP/DOWN" key to choose other documents in the card according to serial number, then press "ENTER" key again to start broadcast the program you chose

currently, **---Frame Speed--** If a program has several fragments, the procedure will broadcast in turn automatically among

several fragments, and also will show the current fragment number. In broadcast condition to press ENTER to the speed regulation menu could adjust broadcast speed. Cut off the power supply system when playing, it'll memorize status, when the power is on

next time, **Default** it 'll choose the file played before the power was off.

2、Check file

In the first-level menu press UP/DOWN key to choose **2-View Filelist**, then press Enter to get into the observe document

information menu, in this condition press UP/DOWN key you can choose other files, presses the ENTER key first to show full filename, and press UP/DOWN key can check the program name, total fragment and pixel spots other information.

3、System setting

Use the UP/DOWN key under the first-level menu to choose **3-System Set**, press Enter first to set address (the serial

number of this item), then press UP/DOWN key, you can choose or adjust the frame speed and test the mode functions. The broadcast speed you can choose default/100ms/200ms/300ms/400ms/500ms, namely a program's default speed and five levels fixed speed, this speed is the broadcast time-gap between the frame and the frame. In testing mode press Enter can realize the terminal aptotic color change, it is available in white, red, green, blue, yellow, cyan, purple, black seven color change.

4、Master- slave mode

Please set serial number in the address of local controller. "001" as master controller, others numbers are subordinative, it only can play programs when it is in master control mode, if it's slave mode, the controller will indicate this mode when it starts to play.

<<<<< >>>>>
Slave mode

When master controller and subordinative controller connect well, chose to play in the master controller,

the subordinative controller will play program synchronously which has the same file name as master controller, and also show the

segment number synchronously which is playing now. **FileName ???/003
S01 Playing...**

In this condition, the file serial number display "???", due to the order of the program in each controller is not the same as in the master even if the prefix is the same, so it use ??? instead.

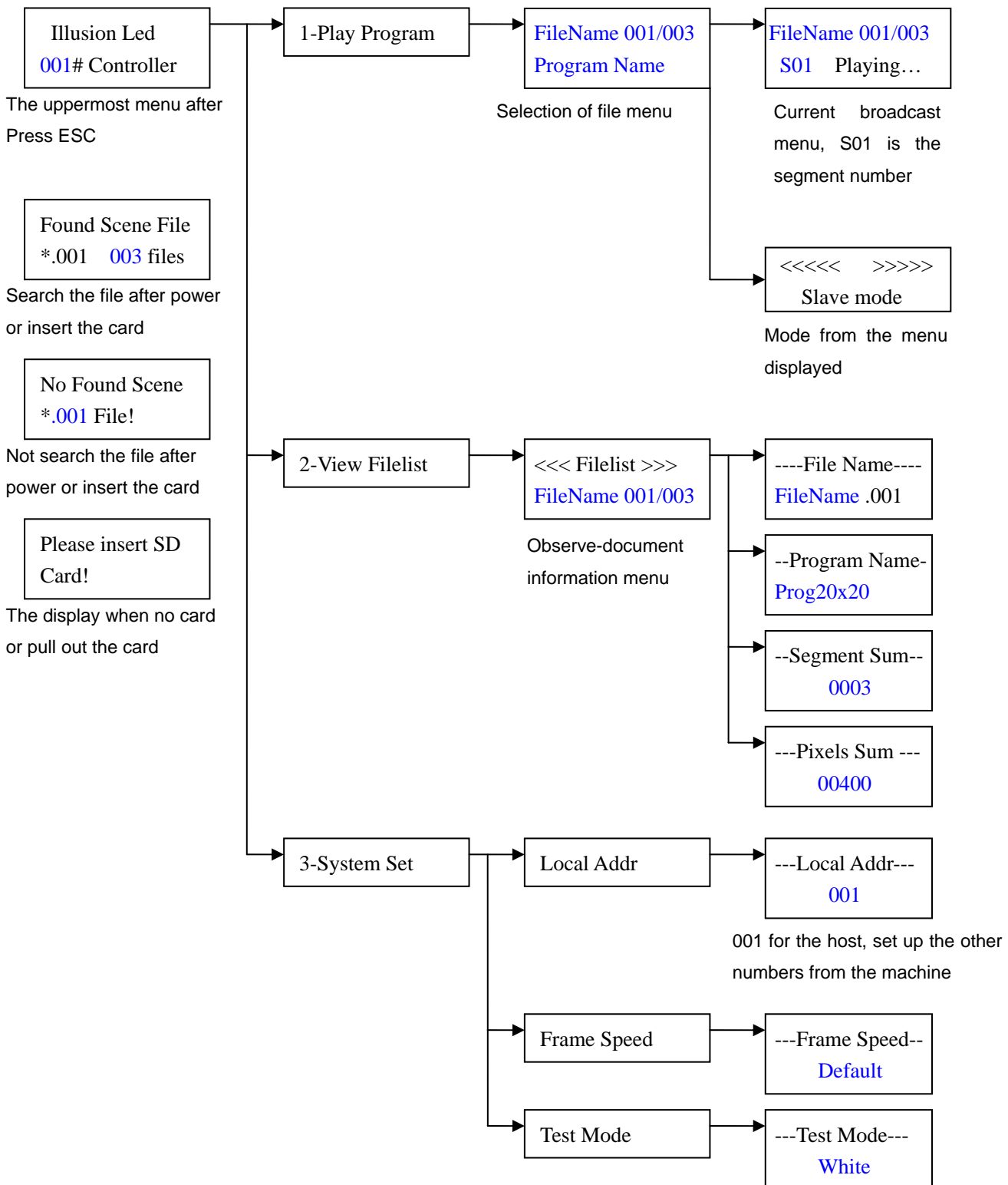
SD Off-line Controller



One master and 254 pcs slaves can be connected together in one control system at most. An amplifier is necessary if there are more than 25 pcs controllers connected, or the total length of the connection is longer than 100 meters.

Menu stratification structure:

Press ENTER key to enter the subordinate menu, and ESC key to return to the former menu, press the UP/DOWN key to switch in the same level menu



Multi-connection diagram:

