

TOUCH LED DIMMER



Due to the tolerance of the measurement, the data can vary up $\pm 1\text{mm}$

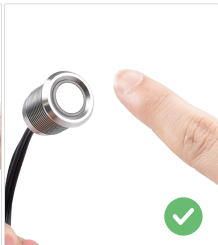
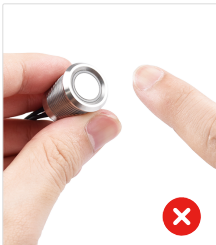
PRODUCT PARAMETERS

Product Name	Touch Led Dimmer
Size	Switch Diameter 16mm
Operating Voltage	DC12-24V
Max Load Current	6A
Output Channel	1 Channel
Max Output Power	72W(12V), 144W(24V)
Output Connector	DC 5.5*2.1
Function	ON/OFF&Brightness dimming
Cable length	18.5cm (including DC connector)
Application	Single color strip control



USEFUL TIPS

Please do not touch the screw surface or install the silver ring while using it



PACKING

